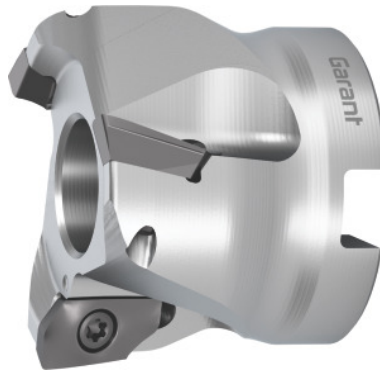


Garant

**Aluminium shoulder mill, with bore, Ø D / number of effective cutting edges
Z: 50/4**



Order data

Order number	211759 50/4
GTIN	4062406681791
Item class	210

Description

Version:

High-performance milling system for high cutting speeds. Absolutely precise insert bedding. Exceptional torsional stiffness thanks to optimised protection against centrifugal force.

Attention:

Before using the indexable insert No. 211777 ALU ($r = 6.0$ mm), the insert seats of the carrier must be modified.

Note:

The **recommended torque** for fastening the insert screws No. 219878 4 and 219878 5 is **3.2 Nm**.

Tool exchange: PowerCard

Overall length L_{tot} : 40 mm

Mounting bore \varnothing : 22 mm

Circular interpolation milling $\varnothing D_{min}$: 90 mm

Circular interpolation milling $\varnothing D_{max}$: 98 mm

Circular interpolation milling a_p : 8.4 mm

Ramping angle α_{max} : 2.29 °

Technical description

Cutting edge $\varnothing D_c$	50 mm
Circular interpolation milling a_p	8.4 mm
Circular interpolation milling $\varnothing D_{min}$	90 mm
Pack of insert screws	219878 5 (15IP)
Ramping length L for α_{max}	37.56 mm
Circular interpolation milling $\varnothing D_{max}$	98 mm
Overall length L_{tot}	40 mm
suitable indexable insert	ZDHT 1505
Ramping angle α_{max}	2.29°
Number of cutting edges Z	4
Mounting bore \varnothing	22 mm
$\varnothing D_3$	40 mm
Shank type	with bore
Setting angle κ	90°
Milling application	Circular milling
Milling application	Ramping
Milling application	Plunging
Through-coolant	yes
Tool exchange	PowerCard
Type of product	End / face mill