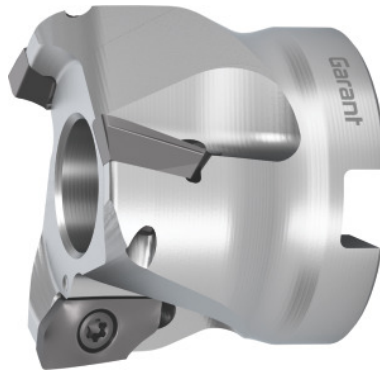


## Garant

**Aluminium shoulder mill, with bore, Ø D / number of effective cutting edges  
Z: 63/4**



### Order data

|              |               |
|--------------|---------------|
| Order number | 211759 63/4   |
| GTIN         | 4062406681807 |
| Item class   | 210           |

### Description

#### Version:

High-performance milling system for high cutting speeds. Absolutely precise insert bedding. Exceptional torsional stiffness thanks to optimised protection against centrifugal force.

#### Attention:

Before using the indexable insert No. 211777 ALU ( $r = 6.0$  mm), the insert seats of the carrier must be modified.

#### Note:

The **recommended torque** for fastening the insert screws No. 219878 4 and 219878 5 is **3.2 Nm**.

Tool exchange: PowerCard

Overall length  $L_{tot}$ : 40 mm

Mounting bore  $\varnothing$ : 22 mm

Circular interpolation milling  $\varnothing D_{min}$ : 116 mm

Circular interpolation milling  $\varnothing D_{max}$ : 124 mm

Circular interpolation milling  $a_p$ : 8 mm

Ramping angle  $\alpha_{max}$ : 1.7 °

### Technical description

|   |                  |
|---|------------------|
| Circular interpolation milling $\varnothing D_{\max}$ | 124 mm           |
| Cutting edge $\varnothing D_c$                        | 63 mm            |
| Ramping angle $\alpha_{\max}$                         | 1.7 °            |
| suitable indexable insert                             | ZDHT 1505        |
| Mounting bore $\varnothing$                           | 22 mm            |
| Ramping length L for $\alpha_{\max}$                  | 50.56 mm         |
| Number of cutting edges Z                             | 4                |
| Circular interpolation milling $a_p$                  | 8 mm             |
| Overall length $L_{\text{tot}}$                       | 40 mm            |
| Pack of insert screws                                 | 219878 5 (15IP)  |
| Circular interpolation milling $\varnothing D_{\min}$ | 116 mm           |
| $\varnothing D_3$                                     | 53 mm            |
| Shank type  | with bore        |
| Setting angle $\kappa$                                | 90 °             |
| Milling application                                   | Circular milling |
| Milling application                                   | Ramping          |
| Milling application                                   | Plunging         |
| Through-coolant                                       | yes              |
| Tool exchange   | PowerCard        |
| Type of product                                       | End / face mill  |