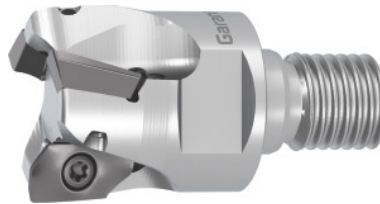


Garant

Aluminium shoulder mill, with threaded shank, $\varnothing D$ / number of effective cutting edges Z: 32/2



Order data

Order number	211757 32/2
GTIN	4062406681869
Item class	210

Description

Version:

High-performance milling system for high cutting speeds. Absolutely precise insert bedding. Exceptional torsional stiffness thanks to optimised protection against centrifugal force.

Attention:

Before using the indexable insert No. 211776 ALU ($r = 5.0$ mm) and 211777 ALU ($r = 6.0$ mm), the insert seats of the carrier must be modified.

Note:

The **recommended torque** for fastening the clamping screws No. 219878 4 and 219878 5 is **3.2 Nm**.

Technical description

Circular interpolation milling a_p	8 mm
Circular interpolation milling $\varnothing D_{\min}$	54 mm
Number of cutting edges Z	2
Ramping angle α_{\max}	4.39 degrees
Mounting thread M	M16
Overall length L_{tot}	35 mm
suitable indexable insert	ZDHT 1505

Circular interpolation milling $\varnothing D_{\max}$	62 mm
$\varnothing D_1$ h6	17 mm
Cutting edge $\varnothing D_c$	32 mm
Ramping length L for α_{\max}	19.56 mm
$\varnothing D_2$	29 mm
Pack of insert screws	219878 4 (15IP)
$\varnothing D_3$	22 mm
Shank type	with threaded shank
Setting angle κ	90 degrees
Milling application	Plunging
Milling application	Circular milling
Milling application	Ramping
Through-coolant	yes
Tool exchange	PowerCard
Type of product	End / face mill