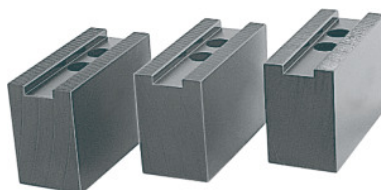


**Top jaws set, 3 pieces, for chuck type: 200****Order data**

Order number	313405 200
GTIN	4019208193410
Item class	32R

**Description****Version:**

Clamping jaws with sharp serrations 1/16 inch × 90°.

**Precision milled** slots and serrations, **not burnished**.

**Material:**

Quality product made of 16MnCr5.

**Suitable for:**

**Heavy-duty chucks** from Schunk, Röhm and other heavy-duty chuck manufacturers.

**Optional extras:**

T-nuts No. 313505 – 313605.

**Note:**

- **When fitting to a chuck, please check serrations, slot width (D), and hole spacing (a, b).**
- **Aluminium top jaws on request.**

**Technical description**

Slot width D	17 mm
Length L	75 mm
Height H	53 mm
Bore spacing b	19 mm
Width B	36 mm
for chuck type	200 mm

Hole centre spacing a	12 mm
for thread DIN 912	M12
Type of product	Heavy-duty lathe chuck jaws