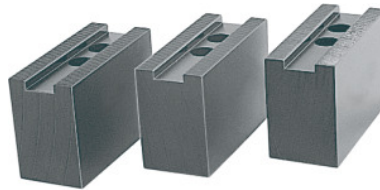




## Top jaws set, 3 pieces, for chuck type: 250



### Order data

Order number	313405 250
GTIN	4062406699185
Item class	32R

### Description

#### Version:

Clamping jaws with sharp serrations 1/16 inch × 90°.

**Precision milled** slots and serrations, **not burnished**.

#### Material:

Quality product made of 16MnCr5.

#### Suitable for:

**Heavy-duty chucks** from Schunk, Röhmm and other heavy-duty chuck manufacturers.

#### Optional extras:

T-nuts No. 313505 – 313605.

#### Note:

- **When fitting to a chuck, please check serrations, slot width (D), and hole spacing (a, b).**
- **Aluminium top jaws on request.**

### Technical description

Width B	45 mm
Hole centre spacing a	15 mm
Height H	54 mm
Length L	95 mm
for chuck type	250 mm
also suitable for chuck type	315 mm

for thread DIN 912	M16
Bore spacing b	25 mm
Slot width D	21 mm
Type of product	Heavy-duty lathe chuck jaws