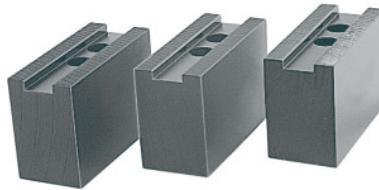




Top jaws set, 3 pieces, for chuck type: 160



Order data

Order number	313405 160
GTIN	4062406699161
Item class	32R

Description

Version:

Clamping jaws with sharp serrations 1/16 inch × 90°.

Precision milled slots and serrations, **not burnished**.

Material:

Quality product made of 16MnCr5.

Suitable for:

Heavy-duty chucks from Schunk, Röhmm and other heavy-duty chuck manufacturers.

Optional extras:

T-nuts No. 313505 – 313605.

Note:

- **When fitting to a chuck, please check serrations, slot width (D), and hole spacing (a, b).**
- **Aluminium top jaws on request.**

Technical description

Length L	67 mm
Slot width D	17 mm
for chuck type	160 mm
for thread DIN 912	M12
Width B	36 mm
Hole centre spacing a	12 mm

Height H	53 mm
Bore spacing b	19 mm
Type of product	Heavy-duty lathe chuck jaws