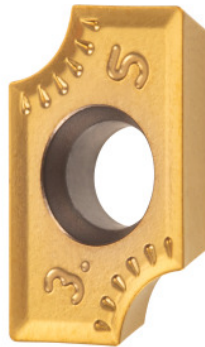


**Garant**
**Radius indexable insert, HB7525, Radius r: 3,5**

**Order data**

Order number	216841 3,5
GTIN	4062406706487
Item class	21A

**Description**
**Application:**

General-purpose indexable insert, preferred for steel, high-alloy steels and cast iron. Optimised chip breaker for unobstructed chip flow.

**Note:**

Can also be used on radius turning tool No. 294500.

Feed  $f_z$  per tooth: 0.1 - 0.4 mm

Length L: 15 mm

Width B: 9.52 mm

Insert thickness S: 3.18 mm

suitable radius cutter: 216825 2

**Technical description**

Feed $f_z$ per tooth	0.1 - 0.4 mm
Width B	9.52 mm
Insert thickness S	3.18 mm
Length L	15 mm

suitable radius cutter	216825 2
Grade	HB7525

## User data

	<b>Suitability</b>	<b>V<sub>c</sub></b>	<b>ISO code</b>
Steel < 500 N/mm <sup>2</sup>	suitable	390 m/min	P
Steel < 750 N/mm <sup>2</sup>	suitable	300 m/min	P
Steel < 900 N/mm <sup>2</sup>	suitable	220 m/min	P
Steel < 1100 N/mm <sup>2</sup>	suitable	160 m/min	P
Steel < 1400 N/mm <sup>2</sup>	suitable	90 m/min	P
INOX < 900 N/mm <sup>2</sup>	suitable	280 m/min	M
INOX > 900 N/mm <sup>2</sup>	suitable	180 m/min	M
GG(G)	suitable	110 m/min	K
Uni	suitable		
wet maximum	suitable		
dry	suitable		