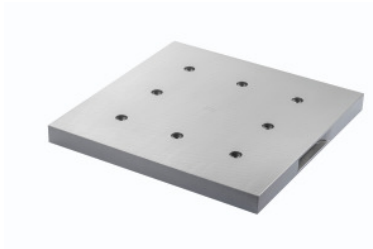


**Garant****Baseplate, Length: 360mm****Order data**

Order number	368010 360
GTIN	4062406745813
Item class	310

**Description****Version:**

System consisting of base plate and clamping/sacrificial plate. Base plate is mounted on the zero point clamping system at 200 mm pitch, or directly on to the machine table. The clamping/sacrificial plate is mounted on the base plate and the negative of the component contour is introduced individually. Alternatively, simple clamping elements from Mite-Bite, AMF, KIPP, Halder and similar can be mounted on the clamping/sacrificial plate for component clamping. Anodised aluminium. Pitch 200 mm and cross pitch 200 mm.

**Suitable for:**

Zero point clamping systems with 200 mm pitch or 200 mm cross pitch (for size 360).

**Supplied with:**

8 fitted screws M8, 8 blanking screws.

**Optional extras:**

Clamping stud No. 360025 18M12.

**Technical description**

Length	360 mm
Height	30 mm
Width	360 mm
Type of product	Adapter plate

