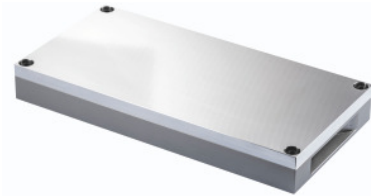


Garant**Clamping/sacrificial plate, Length: 180mm****Order data**

Order number	368015 180
GTIN	4062406745820
Item class	310

Description**Version:**

System consisting of base plate and clamping/sacrificial plate. Base plate is mounted on the zero point clamping system at 200 mm pitch, or directly on to the machine table. The clamping/sacrificial plate is mounted on the base plate and the negative of the component contour is introduced individually. Alternatively, simple clamping elements from Mitee-Bite, AMF, KIPP, Halder and similar can be mounted on the clamping/sacrificial plate for component clamping. Face-milled aluminium plate of EN AW-5083 - Aluminium (3.3547).

Suitable for:

Base plate No. 368010.

Optional extras:

Clamping elements from Mitee-Bite, AMF, Kipp, Halder and similar.

Technical description

Length	180 mm
Width	360 mm
Height	15 mm
Type of product	Adapter plate

