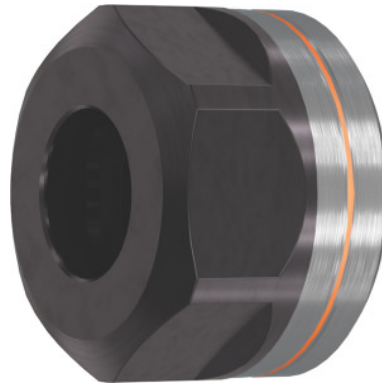


**Garant****ER clamping nut High Speed, for ER: 20****Order data**

Order number	309610 20
GTIN	4062406787318
Item class	31Z

**Description****Version:**

Thread and taper ground in a single setup for highest concentricity.

Nut coated for: lower friction and **increased clamping force** coupled with high wear resistance and corrosion resistance.

**Suitable for:**

All standard ER collet chucks.

**Optional extras:**

ER clamping wrench, No. 309680 – 309740.

Single open ended spanner (for size 16), No. 613300 size 25.

**Note:**

Collet chuck and clamping nut are balanced separately!

**Technical description**

Overall length L	19.5 mm
for ER	20 mm
Thread	M25×1.5

Width across flats AF	30 mm
External Ø D	34 mm
maximum tightening torque	110 Nm
Standard	DIN 6499 D
Balance quality G at rotational speed	G 2.5 at 25,000 rpm
Type of product	Clamping nut

---

## Accessories

Single open ended spanner Width across flats 30 mm	613300 30
--	-----------