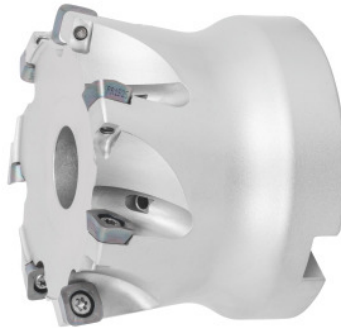




High feed rate milling cutter MFH Harrier, with bore, $\varnothing D$ / number of teeth Z: 80/7mm



Order data

Order number	222065 80/7
GTIN	4960664707683
Item class	250

Description

Description:

MFH Harrier high feed rate indexable face mills enable short machining times thanks to high feed rates and high cutting depths. The approach angle in combination with the convex cutting edges reduces the cutting forces and minimises the tendency to vibrate.

Application:

For increased productivity in face milling, pocket milling and slot milling. Because the cutting forces are so low, large overhangs for plunge milling pose no problem.

Technical description

Insert screw	229718 (15IP; 3.5 Nm)
Indexable insert size	10
Overall length L_{tot}	63 mm
Cutting edge $\varnothing D_c$	80 mm
maximum cutting depth $a_{p,max}$	1.5 mm
Mounting bore \varnothing	27 mm

maximum cutting depth $a_{p,max}$ for LD geometry	3.5 mm
suitable indexable insert	SOMT..
$\varnothing D_3$	63 mm
Number of cutting edges Z	7
Through-coolant	yes
Circular interpolation milling $\varnothing D_{min}$	143 mm
Circular interpolation milling $\varnothing D_{max}$	158 mm
Ramping length L for α_{max}	62.4 mm
Ramping angle α_{max}	0.33 degrees
Setting angle κ	10 degrees
Fz Helix	0.7
Shank type	with bore
Milling application	Ramping
Milling application	Circular milling
Milling application	Plunging
Machining strategy	HPC
Type of product	Copy mill

Accessories

Clamping screw	229718
----------------	--------