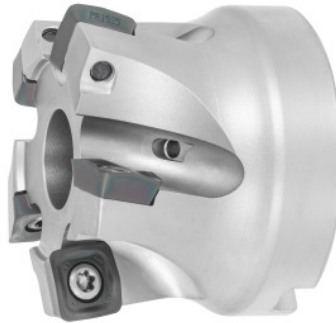




High feed rate milling cutter MFH Harrier, with bore, $\varnothing D$ / number of teeth Z: 63/5Lmm



Order data

Order number	222065 63/5L
GTIN	4960664707713
Item class	250

Description

Description:

MFH Harrier high feed rate indexable face mills enable short machining times thanks to high feed rates and high cutting depths. The approach angle in combination with the convex cutting edges reduces the cutting forces and minimises the tendency to vibrate.

Application:

For increased productivity in face milling, pocket milling and slot milling. Because the cutting forces are so low, large overhangs for plunge milling pose no problem.

Technical description

$\varnothing D_3$	39 mm
maximum cutting depth $a_{p\max}$	2 mm
Overall length L_{tot}	50 mm
Insert screw	229719 (20 IP; 4.5 Nm)
suitable indexable insert	SOMT..
Indexable insert size	14

Cutting edge $\varnothing D_c$	63 mm
Mounting bore \varnothing	22 mm
maximum cutting depth $a_{p\max}$ for LD geometry	5 mm
Number of cutting edges Z	5
Through-coolant	yes
Circular interpolation milling $\varnothing D_{\min}$	102 mm
Circular interpolation milling $\varnothing D_{\max}$	124 mm
Ramping length L for α_{\max}	38 mm
Ramping angle α_{\max}	0.54 degrees
Setting angle κ	10 degrees
Fz Helix	0.7
Shank type	with bore
Milling application	Ramping
Milling application	Circular milling
Milling application	Plunging
Machining strategy	HPC
Type of product	Copy mill

Accessories

Clamping screw	229718
Clamping screw	229719