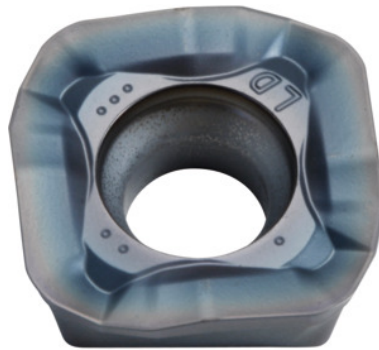



**SOMT....20ER-LD, PR1525, Type: 14**

**Order data**

Order number	222078 14
GTIN	4960664708185
Item class	25A

**Description**
**Version:**

4-edge indexable inserts with convex cutting edges for low cutting forces.

**Application:**

**LD geometry** is also suitable for high cutting depths ( $a_{p\max} = 5$  mm) at moderate feed rates.

Do not use for helical, plunging or contour milling, or on steep walls.

**Note:**

Standard application values for  $a_e = 0.3 \times D$ .

**Technical description**

Feed $f_z$ per tooth	0.03 – 2 mm
Type	ST1400
Programming radius at $a_{p\max}$	5 mm
Corner radius	2 mm
Insert thickness E	5.56 mm
Indexable insert size	14
ISO code indexable insert	SOMT140520ER-LD

Grade	PR1525
Tool material	Carbide
Number of changes/inserts	4
Type of product	Indexable insert for milling

### User data

	Suitability	$V_c$	ISO code
Steel < 500 N/mm <sup>2</sup>	suitable	200 m/min	P
Steel < 750 N/mm <sup>2</sup>	suitable	180 m/min	P
Steel < 900 N/mm <sup>2</sup>	suitable	160 m/min	P
Steel < 1100 N/mm <sup>2</sup>	suitable	140 m/min	P
Steel < 1400 N/mm <sup>2</sup>	suitable	100 m/min	P
wet maximum	suitable only under restricted conditions		
dry	suitable		
Air	suitable		