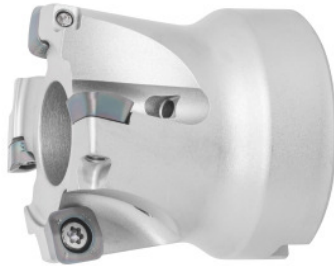




## High feed rate milling cutter MFH Harrier, with bore, $\varnothing D$ / number of teeth Z: 50/4mm



### Order data

Order number	222065 50/4
GTIN	4960664707621
Item class	250

### Description

#### Description:

MFH Harrier high feed rate indexable face mills enable short machining times thanks to high feed rates and high cutting depths. The approach angle in combination with the convex cutting edges reduces the cutting forces and minimises the tendency to vibrate.

#### Application:

For increased productivity in face milling, pocket milling and slot milling. Because the cutting forces are so low, large overhangs for plunge milling pose no problem.

### Technical description

Cutting edge $\varnothing D_c$	50 mm
maximum cutting depth $a_{p\max}$	1.5 mm
maximum cutting depth $a_{p\max}$ for LD geometry	3.5 mm
$\varnothing D_3$	33 mm
Insert screw	229718 (15IP; 3.5 Nm)
Overall length $L_{\text{tot}}$	50 mm
suitable indexable insert	SOMT..

Mounting bore $\varnothing$	22 mm
Indexable insert size	10
Number of cutting edges Z	4
Through-coolant	yes
Circular interpolation milling $\varnothing D_{\min}$	83 mm
Circular interpolation milling $\varnothing D_{\max}$	98 mm
Ramping length L for $\alpha_{\max}$	32.4 mm
Ramping angle $\alpha_{\max}$	0.64 degrees
Setting angle $\kappa$	10 degrees
Fz Helix	0.7
Shank type	with bore
Milling application	Ramping
Milling application	Circular milling
Milling application	Plunging
Machining strategy	HPC
Type of product	Copy mill

## Accessories

Clamping screw	229718
----------------	--------