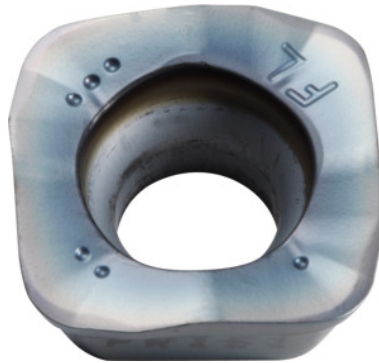



SOMT.....ER-FL, PR1510, Type: 10

Order data

Order number	222090 10
GTIN	4960664708079
Item class	25A

Description
Version:

4-edge indexable inserts with convex cutting edges for low cutting forces.

Application:

FL geometry (surface-oriented) is the first choice for roughing on lower-powered machines. Do not use for helical, plunging or contour milling, or on steep walls.

Note:

Standard application values for $a_e = 0.3 \times D$.

Technical description

Feed f_z per tooth	0.5 – 2 mm
Type	GG
Programming radius at $a_{p,max}$	3 mm
Corner radius	2 mm
Insert thickness E	4.76 mm
Indexable insert size	10

ISO code indexable insert	SOMT140520ER-FL
Grade	PR1510
Tool material	Carbide
Number of changes/inserts	4
Type of product	Indexable insert for milling

User data

	Suitability	V_c	ISO code
GG(G)	suitable	180 m/min	K
wet maximum	suitable only under restricted conditions		
dry	suitable		
Air	suitable		