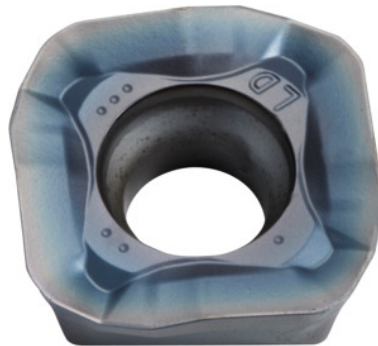



**SOMT....20ER-LD, PR1535, Type: 14**

**Order data**

Order number	222080 14
GTIN	4960664708246
Item class	25A

**Description**
**Version:**

4-edge indexable inserts with convex cutting edges for low cutting forces.

**Application:**

**LD geometry** is also suitable for high cutting depths ( $a_{p\max} = 5$  mm) at moderate feed rates. Do not use for helical, plunging or contour milling, or on steep walls.

**Note:**

Standard application values for  $a_e = 0.3 \times D$ .

**Technical description**

Feed $f_z$ per tooth	0.06 – 1.8 mm
Type	INOX
Programming radius at $a_{p\max}$	5 mm
Corner radius	2 mm
Insert thickness E	5.56 mm
Indexable insert size	14
ISO code indexable insert	SOMT140520ER-LD

Grade	PR1535
Tool material	Carbide
Number of changes/inserts	4
Type of product	Indexable insert for milling

## User data

	<b>Suitability</b>	<b>V<sub>c</sub></b>	<b>ISO code</b>
INOX < 900 N/mm <sup>2</sup>	suitable	160 m/min	M
INOX > 900 N/mm <sup>2</sup>	suitable	120 m/min	M
Ti > 850 N/mm <sup>2</sup>	suitable	40 m/min	S
wet maximum	suitable only under restricted conditions		
dry	suitable		
Air	suitable		