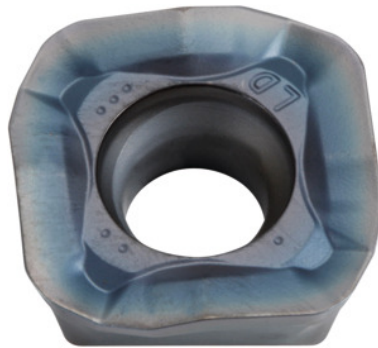



SOMT....20ER-LD, PR1510, Type: 14

Order data

Order number	222082 14
GTIN	4960664708123
Item class	25A

Description
Version:

4-edge indexable inserts with convex cutting edges for low cutting forces.

Application:

LD geometry is also suitable for high cutting depths ($a_{p\max} = 5$ mm) at moderate feed rates. Do not use for helical, plunging or contour milling, or on steep walls.

Note:

Standard application values for $a_e = 0.3 \times D$.

Technical description

Feed f_z per tooth	0.06 – 2 mm
Type	GG
Programming radius at $a_{p\max}$	5 mm
Corner radius	2 mm
Insert thickness E	5.56 mm
Indexable insert size	14
ISO code indexable insert	SOMT100420ER-LD

Grade	PR1510
Tool material	Carbide
Number of changes/inserts	4
Type of product	Indexable insert for milling

User data

	Suitability	V_c	ISO code
GG(G)	suitable	180 m/min	K
wet maximum	suitable only under restricted conditions		
dry	suitable		
Air	suitable		