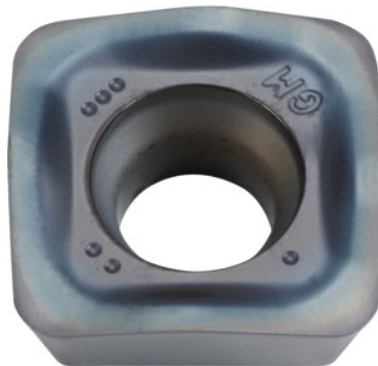



**SOMT....20ER-GM, PR1510, Type: 14**

**Order data**

Order number	222074 14
GTIN	4960664708116
Item class	25A

**Description**
**Version:**

4-edge indexable inserts with convex cutting edges for low cutting forces.

**Application:**

**FL geometry** is the first choice for general machining.

**Note:**

Standard application values for  $a_e = 0.3 \times D$ .

**Technical description**

Feed $f_z$ per tooth	0.5 – 2 mm
Type	GG
Programming radius at $a_{p,max}$	3.5 mm
Corner radius	2 mm
Insert thickness E	5.56 mm
Indexable insert size	14
ISO code indexable insert	SOMT140520ER-GM

Grade	PR1510
Tool material	Carbide
Number of changes/inserts	4
Type of product	Indexable insert for milling

**User data**

	<b>Suitability</b>	<b>V<sub>c</sub></b>	<b>ISO code</b>
GG(G)	suitable	180 m/min	K
wet maximum	suitable only under restricted conditions		
dry	suitable		
Air	suitable		