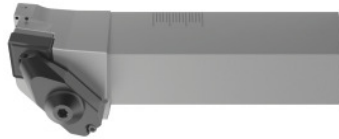


**Garant**
**GARANT Master eco clamp toolholder short, left-hand, Shank / insert size: 20/12mm**

**Order data**

|              |               |
|--------------|---------------|
| Order number | 250003 20/12  |
| GTIN         | 4067263121152 |
| Item class   | 21U           |

**Description**
**Version:**

Highly efficient cooling directly on the cutting edge and additional flank face cooling.

**Note:**

Coolant transfer via slot on the underside of the shank in conjunction with GARANT Master eco toolholder No. 319006 – 319136 or No. 317900 for shank length < 125 mm. Optional connection possibility via hose connection (G 1/8 inch) No. 269207 and 269208.

**Technical description**

|                                 |                 |
|---------------------------------|-----------------|
| Shim                            | 259031 49       |
| ISO code toolholder             | DCLNR/L 2020H12 |
| Overall length L                | 100 mm          |
| Shim screw                      | 259027 8        |
| suitable indexable insert       | CN.. 1204..     |
| Shank size                      | 20 mm           |
| Insert size                     | 12 mm           |
| Head length L <sub>1</sub>      | 30 mm           |
| Series                          | Master Eco      |
| Functional width L <sub>4</sub> | 25 mm           |

|                        |                               |
|------------------------|-------------------------------|
| Clamp, screw, O-ring   | 259036 22                     |
| Standard               | Works standard                |
| Application type       | left-hand                     |
| Through-coolant        | yes                           |
| Setting angle $\kappa$ | 95 degrees                    |
| Application            | External longitudinal turning |
| Application            | External longitudinal turning |
| Type of product        | Screw-on toolholder           |

---

## Accessories

|                    |           |
|--------------------|-----------|
| Shim screw Type 8  | 259027 8  |
| Clamp unit Type 22 | 259036 22 |
| Shim Type 49       | 259031 49 |