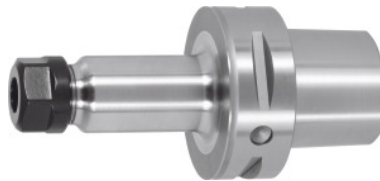


Garant
ER collet chuck, PSC 50 A = 100, for ER collet size: 25

Order data

Order number	308517 25
GTIN	4067263014645
Item class	31A

Description
Version:

- **With RFID/Balluffchip bore.**
- **All shanks hard turned (for smooth running!).**
- **Mating faces of the PSC internal contour machined.**

Application:

For clamping tools with plain shank in ER collets to DIN 6499 Form A and B.

Supplied with:

Coated High-Speed clamping nut.

Optional extras:

ER collets No. 308881 – 309434, ER chuck key No. 309680 or 613300, coolant pipe No. 309885 and socket No. 309893.

Coolant tube and assembling key for coolant tubes No. 309885 and 309893.

Through-coolant: yes

Clamping range: 1 - 16 mm

Overhang dimension A: 100 mm

External Ø D: 42 mm

Spare GARANT high-speed clamping nut No. 309610: 25

Technical description

Overhang dimension A	100 mm
External Ø D	42 mm
Clamping range	1 - 16 mm

Spare GARANT high-speed clamping nut No. 309610	25
Adapter	PSC 50 A = 100
Arbor standard	ISO 26623-1
Balance quality G at rotational speed	G 2.5 at 25,000 rpm
Concentricity	$\leq 3 \mu\text{m}$
Machining strategy	HSC
Through-coolant	yes
Type of product	Collet chuck