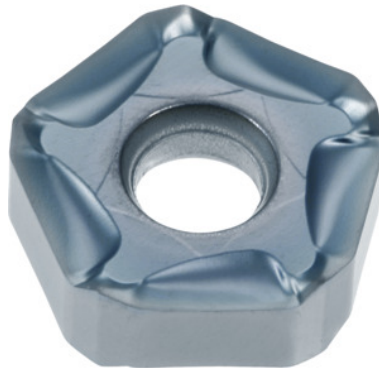



**PNMU 1205 ANER-SM, PR1525, Type: ST1400**

**Order data**

Order number	222806 ST1400
GTIN	4960664671212
Item class	25A

**Description**
**Note:**

Standard application values for  $a_e = 0.3 \times D$ .

Feed  $f_z$  per tooth: 0.07 – 0.27 mm

**Technical description**

Type	ST1400
Feed $f_z$ per tooth	0.07 – 0.27 mm
Number of changes/inserts	10
ISO code indexable insert	PNMU 1205 ANER-SM
Grade	PR1525
Tool material	Carbide
Type of product	Indexable insert for milling

**User data**

	<b>Suitability</b>	<b>V<sub>c</sub></b>	<b>ISO code</b>
Steel < 500 N/mm <sup>2</sup>	suitable	200 m/min	P
Steel < 750 N/mm <sup>2</sup>	suitable	180 m/min	P
Steel < 900 N/mm <sup>2</sup>	suitable	180 m/min	P
Steel < 1100 N/mm <sup>2</sup>	suitable	140 m/min	P
Steel < 1400 N/mm <sup>2</sup>	suitable	140 m/min	P
INOX < 900 N/mm <sup>2</sup>	suitable	150 m/min	M
INOX > 900 N/mm <sup>2</sup>	suitable	140 m/min	M
Uni	suitable		
wet maximum	suitable only under restricted conditions		
wet minimum	suitable only under restricted conditions		
dry	suitable		
Air	suitable		