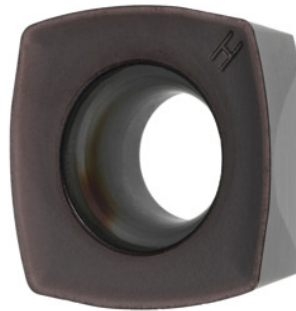


**Garant**
**XDLT 120408 ER, HB7720, Type: HART**

**Order data**

Order number	212974 HART
GTIN	4045197581785
Item class	21A

**Description**
**Note:**

Standard application values for  $a_e = 0.5 \dots 1 \times D / a_{p \max}$

Feed  $f_z$  per tooth: 0.57 mm

ISO code indexable insert: XDLT 120408 ER

Type: HART

Corner radius: 0.8 mm

Programming radius at  $a_{p \max}$ : 2.6 mm

**Technical description**

Type	HART
ISO code indexable insert	XDLT 120408 ER
Programming radius at $a_{p \max}$	2.6 mm
Corner radius	0.8 mm
Grade	HB7720
Tool material	Carbide

maximum cutting depth $a_{p\max}$	1.8 mm
Feed $f_z$ per tooth	0.57 mm
Number of changes/inserts	4
Type of product	Indexable insert for milling