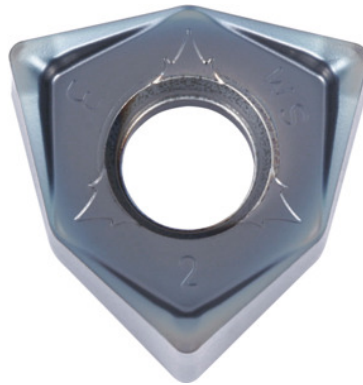



WNMU 080608 EN-SM, PR1535, Type: INOX

Order data

Order number	225625 INOX
GTIN	4960664686162
Item class	25A

Description
Version:

MEGACOAT-coated indexable inserts with **6 edges** – due to double-sided version. The high axial rake angle up to a maximum of 13° significantly reduces the cutting force.

Application:

The **SM geometry** has a highly positive rake and cuts smoothly.

Note:

Standard application values for $a_e = 0.3 \times D$.

Feed f_z per tooth: 0.06 – 0.2 mm

ISO code indexable insert: WNMU 080608 EN-SM

Corner radius: 0.8 mm

Technical description

Type	INOX
ISO code indexable insert	WNMU 080608 EN-SM
Corner radius	0.8 mm
Number of changes/inserts	6

Grade	PR1535
Tool material	Carbide
Feed f_z per tooth	0.06 – 0.2 mm
Type of product	Indexable insert for milling