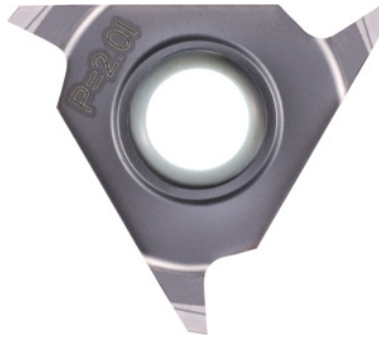


**Garant****Milling insert 60°, HB7720, Pitch: 3,5mm****Order data**

Order number	217510 3,5
GTIN	4045197217608
Item class	21C

**Description****Note:**

55° inserts on request.

**Technical description**

for threads $\geq$	M33×3.5
Depth t	2.023 mm
Insert thickness E	4 mm
Insert geometry	Full profile
External $\varnothing$ D	23 mm
Number of clamping slots	3
Thread pitch	3.5 mm
Application	Internal
Grade	HB7720
Tool material	Carbide

Thread type	MF
Thread type	M
Thread type	MF-LH
Thread type	M-LH
Flank angle	60 degrees
Type	01
Number of cutting edges Z	3
Cutting direction	right-hand and left-hand
Type of product	Cutter insert for circular milling

### User data

	Suitability	V <sub>c</sub>	ISO code
Alu plastics	suitable	600 m/min	N
Aluminium (short chipping)	suitable	500 m/min	N
Alu > 10% Si	suitable	400 m/min	N
Steel < 500 N/mm <sup>2</sup>	suitable	260 m/min	P
Steel < 750 N/mm <sup>2</sup>	suitable	220 m/min	P
Steel < 900 N/mm <sup>2</sup>	suitable	180 m/min	P
Steel < 1100 N/mm <sup>2</sup>	suitable	100 m/min	P
Steel < 1400 N/mm <sup>2</sup>	suitable	80 m/min	P
Steel < 55 HRC	suitable only under restricted conditions	60 m/min	H
Steel < 60 HRC	suitable only under restricted conditions	45 m/min	H
Steel < 65 HRC	suitable only under restricted conditions	35 m/min	H
Steel < 67 HRC	suitable only under restricted conditions	30 m/min	H
INOX < 900 N/mm <sup>2</sup>	suitable only under restricted conditions	130 m/min	M

INOX > 900 N/mm <sup>2</sup>	suitable only under restricted conditions	120 m/min	M
Ti > 850 N/mm <sup>2</sup>	suitable	100 m/min	S
GG(G)	suitable only under restricted conditions	120 m/min	K
Uni	suitable		
wet maximum	suitable		
dry	suitable only under restricted conditions		