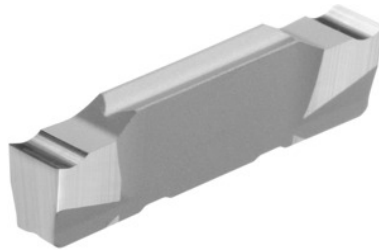


**Garant****Parting-off / grooving insert, HU7310, Groove width w: 2mm****Order data**

Order number	273709 2
GTIN	4067263736714
Item class	21L

**Technical description**

Finishing/roughing assignment	Skrubbearbejdning-sletbearbejdning
Tolerance groove width w	$\pm 0.03$ mm
Tool material	Carbide
Coating	uncoated
Feed f	0.05 - 0.15 mm/rev.
Groove width w	2 mm
Main application	N
Secondary application	Ti
Cutting conditions	continuous
Grade	HU7310
Corner radius R	0.05 mm
Number of changes/inserts	2
Indexable insert profile	neutral
Type of product	Indexable insert for grooving

**User data**

	<b>Suitability</b>	<b>V<sub>c</sub></b>	<b>ISO code</b>
Alu plastics	suitable	350 m/min	N
Aluminium (short chipping)	suitable	350 m/min	N
Alu > 10% Si	suitable	280 m/min	N
Ti > 850 N/mm <sup>2</sup>	suitable	50 m/min	S
continuous	suitable		
irregular	suitable only under restricted conditions		
wet maximum	suitable		