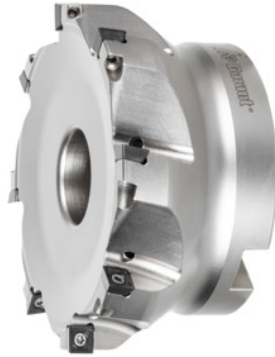


**Garant****GARANT Softcut® HSI wide pitch, with bore, Ø D / number of teeth Z:  
100/8mm****Order data**

Order number	214906 100/8
GTIN	4045197674494
Item class	210

**Description****Version:**

Wear-resistant heat-treated steel with corrosion-inhibiting coating. Precise indexable insert seating by use of appropriate torque. Wide and close tooth pitches for individual milling strategies.

**Application:**

Particularly suitable for machines with lower drive power and for machining at greater depths and small entry diameters.

**Note:**

To use all **4 cutting edges**, the insert must **always be turned in the direction shown (anticlockwise)**.

Use GARANT torque screwdriver TQ No. **211750 size 2.2** with bit No. **674252 size 8IP**.

**For exact 90° corners, select  $a_p = 6$  mm.**

**Technical description**

Cutting edge Ø $D_c$	100 mm
maximum cutting depth $a_{p\max}$	6 mm

Mounting bore $\varnothing$	32 mm
suitable indexable insert	SO.. 0836..
Overall length $L_{tot}$	50 mm
Pack of insert screws	219863 (8IP; 2.2 Nm)
Number of cutting edges Z	8
Series	Softcut®
Shank type	with bore
Setting angle $\kappa$	90 degrees
Milling application	Corner milling
Spacing of the cutters	unequal spacing
Through-coolant	yes
Tool exchange	PowerCard
Type of product	End / face mill

## Accessories

PrecisionBit for Torx Plus®, 1/4 inch E 6.3 Torx Plus® profile 8IP	674252 8IP
Torque screwdriver, fixed setting set torque 2,2 N·m	211750 2,2
Set of insert screws 10 pieces	219863