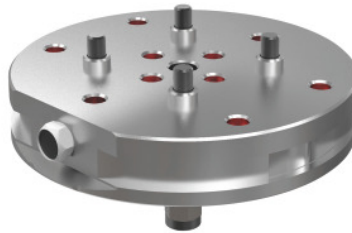




## ITS148P adapter plate, Type: 148P



### Order data

Order number	363085 148P
GTIN	2050002077768
Item class	30N

### Description

#### Version:

Stainless steel. Centring integrated in the plate. Includes screws, centring sleeves and blanking plugs. Chucking spigot F/M Production ER-010742 included.

#### Application:

Can be used on all EROWA PowerChuck P and ProductionChuck 210 Combi. For attaching clamping devices/centring vices with 52 mm pitch.

For adapting the centring vices 363000 size 50/80 and 363300 size 75 to the Erowa zero point clamping system ITS148P.

### Technical description

suitable for colour code	Xtric 50
suitable for colour code	Xtric 80
suitable for colour code	HOLEX ZS 75
Type of product	Adapter plate