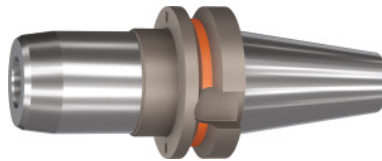


Garant
BASIC hydraulic chuck slim, Form AD, BT 30 short, Clamping \varnothing D1: 20mm

Order data

Order number	303820 20
GTIN	4067263239710
Item class	31A

Description
Version:

- Radial run-out $\leq 3 \mu\text{m}$.
- Balluffchip bore.
- Axial length adjustment up to 10 mm available.
- Flexibility thanks to the use of reducing adapters.
- Coolant pressure up to 80 bar.

Application:

For drilling, reaming and finish milling.

Optional extras:

Pull studs (PS) No. 308760 – 308806, reducing sleeves No. 302135 – 302187.

Technical description

External \varnothing D	44.5 mm
Overhang dimension A	90 mm
Clamping \varnothing D ₁	20 mm
\varnothing D ₂	42 mm
a	1 mm
Adapter	BT 30 short
Standard	DIN 6359
Arbor standard	JIS B6339

Arbor standard	ISO 7388-2
Shape	AD
Through-coolant	yes, with max. 80 bar
Balance quality G at rotational speed	G 2.5 at 25,000 rpm
Concentricity	$\leq 3 \mu\text{m}$
Machining strategy	HSC
Version	BT-DC