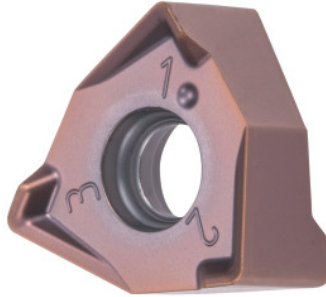


Garant**XNEX 080608, HB7710, Type: GGG**

Order data

Order number	215190 GGG
GTIN	4067263499527
Item class	21A

Description

Version:

6 edges ensure good value for money, due to a low price per cutting edge.
Double-sided 2x3-edge carbide indexable insert for **shoulder milling operations**.

Note:

Standard application values for $a_e = 0.3 \times D$ / $a_p = 3\text{mm}$.

Technical description

Type	GGG
Insert thickness S	6.35 mm
Corner radius	0.8 mm
Feed f_z per tooth	0.23 mm
ISO code indexable insert	XNEX 080608
Grade	HB7710
Tool material	Carbide

maximum cutting depth $a_{p\max}$	4 mm
Number of changes/inserts	6
Coating	coated
Type of product	Indexable insert for milling

User data

	Suitability	V_c	ISO code
Steel < 900 N/mm ²	suitable	240 m/min	P
Steel < 1100 N/mm ²	suitable	200 m/min	P
Steel < 1400 N/mm ²	suitable	180 m/min	P
GGG	suitable	290 m/min	K
wet maximum	suitable only under restricted conditions		
dry	suitable		