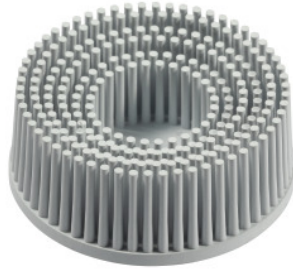




## Special cleaning brush quick-change system Ø 50 mm, Grit: 120



### Order data

Order number	573511 120
GTIN	9009013051765
Item class	53M

### Description

#### Version:

Cast special cleaning brushes are homogeneous grinding bodies with a mixture of precision-formed ceramic grit and Aluminium Oxide, and an **exceptionally long working life. Extremely flexible and versatile.**

#### Application:

**On virtually all materials, with the highest possible safety.** Removal of rust, remains of adhesive, paint, light scratches and burrs. For smoothing, finishing, polishing, cleaning, and deburring.

For use on straight die grinders and small angle grinders with quick-change backing pad No. 554090 – 554094 (mandrel Ø 6 mm or M14 mounting).

### Technical description

Colour	white
Grit	120
maximum speed	25000 min <sup>-1</sup>
Grinding medium code	Ceramic

Type of product

Cup brush