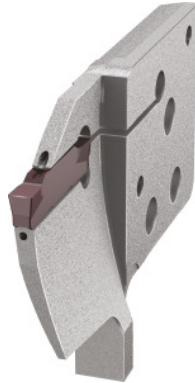


**Garant**

**Vario plus eco blade carrier, convex for face grooving, left-hand, Ø range for groove D1 / D2: 105/143mm**



## Order data

Order number	274513 105/143
GTIN	4067263950417
Item class	21U

## Description

### Version:

Optimised system stability thanks to multiple screw clamping and form fit.

### Suitable for:

Toolholder No. 274500 – 274503, 274530, 274531.

### Attention:

Without clamping screws (these are supplied with the toolholders).

### Note:

$D_1$  = minimum Ø for the first first groove /  $D_2$  = minimum Ø for the second groove.

## Technical description

maximum cutting depth $t_{max}$	18 mm
minimum 1st groove Ø $D_1$	105 mm
suitable indexable insert	No. 273656 – 273749
maximum 1st groove Ø $D_2$	143 mm

## Data sheet

Series	Eco
Application type	left-hand
Through-coolant	yes
Groove width w	2 mm
Type of product	Cartridges