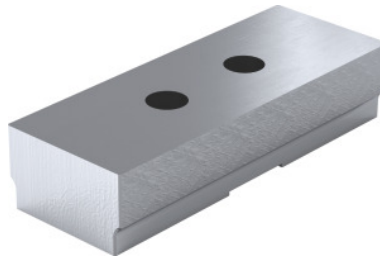


**Top jaw soft, Jaw width b: 160Amm****Order data**

Order number	363324 160A
GTIN	4067263087090
Item class	30N

Description**Version:**

Soft jaws for realising customised contours and for machining sensitive components.

Technical description

suitable for colour code	HOLEX ZS 120
Jaw length l	54 mm
l_2	60 mm
Weight	0.9 kg
Jaw height h	35 mm
Jaw width b	160 mm
Material	Aluminium
maximum clamping force	50 kN
Type of product	Vice jaws

