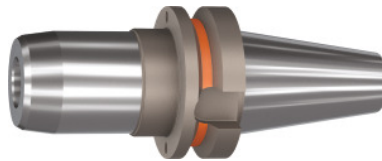


**Garant**
**BASIC hydraulic chuck slim, Form ADB, BT 40 short, Clamping  $\varnothing$  D1: 12mm**

**Order data**

|              |               |
|--------------|---------------|
| Order number | 303825 12     |
| GTIN         | 4067263239727 |
| Item class   | 31A           |

**Description**
**Version:**

- Radial run-out  $\leq 3 \mu\text{m}$ .
- Balluffchip bore.
- Axial length adjustment up to 10 mm available.
- Flexibility thanks to the use of reducing adapters.
- Coolant pressure up to 80 bar.

**Application:**

For drilling, reaming and finish milling.

**Optional extras:**

Pull studs (PS) No. 308760 – 308806, reducing sleeves No. 302135 – 302187.

**Technical description**

|                                       |             |
|---------------------------------------|-------------|
| External $\varnothing$ D              | 44.5 mm     |
| Clamping $\varnothing$ D <sub>1</sub> | 12 mm       |
| Overhang dimension A                  | 90 mm       |
| Adapter                               | BT 40 short |
| Arbor standard                        | JIS B6339   |
| Arbor standard                        | ISO 7388-2  |
| Arbor standard                        | DIN 6359    |
| Shape                                 | ADB         |

|                                       |                       |
|---------------------------------------|-----------------------|
| Through-coolant                       | yes, with max. 80 bar |
| Balance quality G at rotational speed | G 2.5 at 25,000 rpm   |
| Concentricity                         | $\leq 3 \mu\text{m}$  |
| Machining strategy                    | HSC                   |
| Version                               | BT-DC                 |