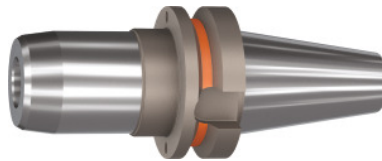


**Garant**
**BASIC hydraulic chuck slim, Form ADB, BT 40 short, Clamping  $\varnothing$  D1: 20mm**

**Order data**

Order number	303825 20
GTIN	4067263239734
Item class	31A

**Description**
**Version:**

- Radial run-out  $\leq 3 \mu\text{m}$ .
- Balluffchip bore.
- Axial length adjustment up to 10 mm available.
- Flexibility thanks to the use of reducing adapters.
- Coolant pressure up to 80 bar.

**Application:**

For drilling, reaming and finish milling.

**Optional extras:**

Pull studs (PS) No. 308760 – 308806, reducing sleeves No. 302135 – 302187.

**Technical description**

$\varnothing$ D <sub>2</sub>	42 mm
Overhang dimension A	90 mm
External $\varnothing$ D	44.5 mm
Clamping $\varnothing$ D <sub>1</sub>	20 mm
Adapter	BT 40 short
Arbor standard	JIS B6339
Arbor standard	ISO 7388-2
Arbor standard	DIN 6359

Shape	ADB
Through-coolant	yes, with max. 80 bar
Balance quality G at rotational speed	G 2.5 at 25,000 rpm
Concentricity	$\leq 3 \mu\text{m}$
Machining strategy	HSC
Version	BT-DC