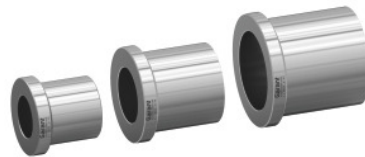


**Garant****Cylindrical taper sleeve With inner taper, MT/external Ø B: 5/55****Order data**

Order number	327492 5/55
GTIN	4067263558453
Item class	31G

**Description****Version:**

Ground tapered sleeves for adapting the Morse taper shank to cylindrical clamping in the lathe chuck or collet chuck. The collar prevents axial displacement in the chuck.

**Suitable for:**

Face driver base body No. 327455; 327465 and Röhlm CoAE.

**Note:**

When used in lathe chucks, it is recommended to turn/grind the clamping jaws.

A: 64 mm

Length C: 52 mm

Overall length L: 60 mm

**Technical description**

Overall length L	60 mm
A	64 mm
Length C	52 mm