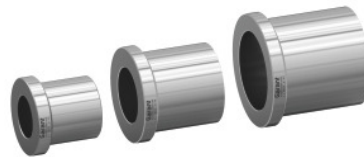


Garant**Cylindrical taper sleeve With inner taper, MT/external Ø B: 4/45****Order data**

Order number	327492 4/45
GTIN	4067263558446
Item class	31G

Description**Version:**

Ground tapered sleeves for adapting the Morse taper shank to cylindrical clamping in the lathe chuck or collet chuck. The collar prevents axial displacement in the chuck.

Suitable for:

Face driver base body No. 327455; 327465 and Röhmm CoAE.

Note:

When used in lathe chucks, it is recommended to turn/grind the clamping jaws.

A: 54 mm

Length C: 42 mm

Overall length L: 50 mm

Technical description

Overall length L	50 mm
A	54 mm
Length C	42 mm