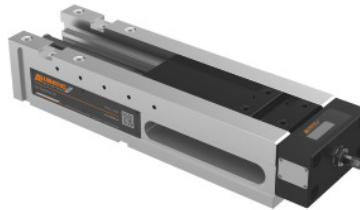




NC high-pressure vice TitanSense, Type: 160



Order data

Order number	361303 160
GTIN	4250364404211
Item class	34A

Description

Version:

- **Clamps for modular clamping system with intelligent clamping force monitoring.**
- **Monitoring of the clamping force during clamping and during machining by means of an integrated electronic measuring system. Display directly on a robust and splash-proof display and via wireless transmission to the end device (via Bluetooth (BLE)).**
- **Enclosed spindle with power intensifier (IP65).**
- **Process-safe clamping with high repeatability.**
- **Can be used horizontally and vertically, making it ideal for 3 and 4-axis machines.**
- **Clamping of raw and pre-machined parts (parallel, round and shapeless) also with Gripp and pull-down clamping for materials up to approx. 1400 N/mm² strength.**
- **Slides induction hardened. Side, top and bottom faces ground.**

Feature:

The clamping force can be measured with all compatible jaws, thanks to the integrated measuring unit in the spindle.

Transmission range up to 20 m. Easy and fast replacement of standard batteries (LS14250; 1/2AA) with long battery life. Operating temperature between 10°C and 40°C. QR code for quick access to technical information, accessories, spare parts and service on the rating plate.

Increased force travel for secure clamping of blanks in combination with a pull-down function.

Jaws secured with M12 socket head screws.

8 mm lost clearance when pulled down, 3 mm for Gripp.

Clamping can be achieved close to the neutral line. Clamping jaws from the Allmatic/GARANT NC clamping range are compatible (see special accessories).

Outlet for chips and coolant. Precise location slots.

Tapped holes for component backstop and for extension.
Maximum clamping force 40 kN. Can be installed vertically.

Advantage:

Precise and powerful multi-function high-pressure vice.

- **Reliable clamping of blank parts, thanks to the extra long stroke of the high-pressure spindle.**
- **Precision machined finished parts, base body machined all round.**

Function:

Clamping exclusively with adjustable torque wrench (maximum 30 Nm). Using special high pressure spindle and mechanical power intensifier.

Application:

For conventional clamping, grip clamping and pull-down clamping. Clamping of **flame-cut and saw-cut blanks** by **hardened replaceable Gripp elements** piercing into the workpiece. Suitable for all materials up to tensile strength of 1000 N/mm. Can be used horizontally or laterally.

Supplied with:

3 pcs. hexagon L-wrenches, bi-hex socket 14 AF, 4 pcs. stepless adjustable clamps.

Optional extras:

- **Jaws No. 361331 – 361970.**
- **Torque wrench No. 656050 size 60.**
- **Adapter plate for quick jaw change Xtric No. 361293; 361294 size 125.**
- **Adapter plates No. 361297; 361298 size 125.**

Note:

Clamp capacity extension available using base body No. 360420 size 160.

Technical description

Weight	52 kg
m	234 mm
Base body height c	115 mm
Longitudinal slot	20 mm
Base body length a	530 mm
r	164 mm
f	21 mm
Colour code for suitable accessories	Titan2/TitanSense
g	30 mm
Cross-slot	20 mm
Base body width B	164 mm

Version	Zero-point clamping system
Overall length L	624 mm
Type of product	Machine vice