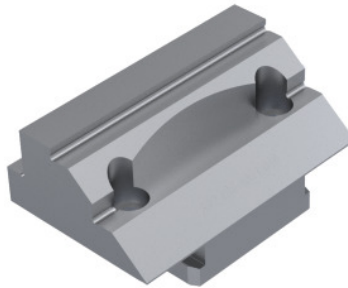




Universal quick-change jaw, Jaw width b: 125mm



Order data

Order number	361275 125
GTIN	4250364404082
Item class	34H

Description

Version:

- Jaw made of hardened steel.
- Clamping of blanks and pre-machined parts (parallel, round and unshaped) – also with Gripp and pull-down clamping.

Feature:

- Can be used as a stepped jaw, shape jaw (turned for round parts) and with a pre-screwed Gripp strip for clamping workpieces.
- Can be used with all Gripp inserts of the Titan 2 series (except for Gripp inserts round h5.5).

Suitable for:

TeleSense No. 361270.

Optional extras:

Gripp strip No. 361280.

Note:

Can be used with all Gripp inserts of the Titan 2 series (except for Gripp inserts round h5.5).

Technical description

Jaw width b	125 mm
Type of product	Vice jaws

