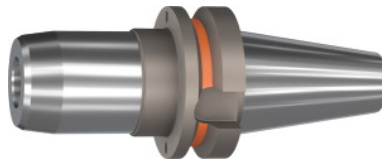


**Garant**
**BASIC hydraulic chuck short, slim, Form AD, BT 30, Clamping  $\varnothing$  D1: 12mm**

**Order data**

Order number	303471 12
GTIN	4067263239673
Item class	31A

**Description**
**Version:**

- Radial run-out  $\leq 3 \mu\text{m}$ .
- With RFID/Balluffchip bore.
- Axial length adjustment possible (adjustment range  $V = 10 \text{ mm}$ ).
- Flexibility thanks to the use of reducing adapters.
- Coolant pressure up to 80 bar.

**Application:**

For drilling, reaming and finish milling.

**Delivery conditions:**

Incl. length adjustment screw and hexagon key with T-handle.

**Optional extras:**

Pull studs (PS) No. 308760 – 308802, reducing sleeves No. 302135 – 302187.

**Technical description**

Overhang dimension A	55 mm
External $\varnothing$ D	46 mm
$L_2$	44.5 mm
$\varnothing$ D <sub>2</sub>	32 mm
Thread M	M10×1
Clamping $\varnothing$ D <sub>1</sub>	12 mm

Overhang length L <sub>1</sub> incl. recess	63 mm
Adapter	BT 30
Arbor standard	ISO 7388-2
Arbor standard	JIS B6339
Shape	AD
Through-coolant	yes, with max. 80 bar
Balance quality G at rotational speed	G 2.5 at 25,000 rpm
Concentricity	≤ 3 μm
Machining strategy	HSC
Balluffchip bore	yes
Type of product	Hydraulic chuck