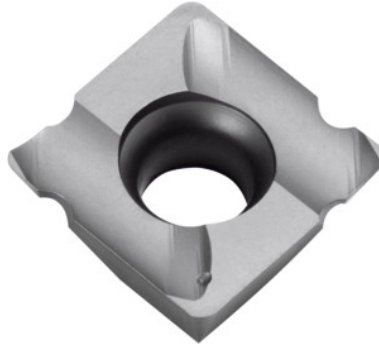




Radiused indexable insert, HB7525, Type / Radius R: 16/1



Order data

Order number	231525 16/1
GTIN	4045197503008
Item class	21Y

Description

Version:

2-cutter radiused indexable inserts.

Application:

For convex radii on external \varnothing or in holes.

Suitable for :

No. 231500 size 16

X: 2.75 mm

Y: 1.5 mm

Z: 2.5 mm

Technical description

Type	16
Z	2.5 mm
Radius R	1 mm
X	2.75 mm
L	11.11 mm

S	3.97 mm
Y	1.5 mm
Grade	HB7525
Tool material	Carbide
Type of product	Indexable insert for drilling

Accessories

Radiused indexable insert set Type / Radius R 16/1-3	231526 16/1-3
--	---------------