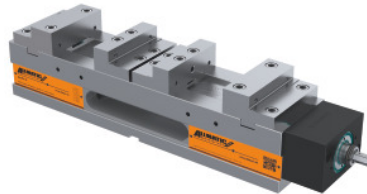




## NC high pressure vice Duo, Type: 125



### Order data

Order number	360600 125
GTIN	4250364400626
Item class	34A

### Description

#### Version:

Particularly rigid body made of spheroidal graphite iron, ground on top and bottom faces.

**Pairing accuracy 0.02 mm.**

#### Function:

Insert first piece at **clamping position I** and turn the crank until movable jaw touches the component, then insert second part at **clamping position II** and continue to turn the crank all the way to the stop.

#### Application:

- For horizontal use.
- Clamping of 2 identical parts, dimensional differences ( $\pm 3$  mm).

#### Supplied with:

Includes 4 stepped jaws, 1 crank handle, 4 steplessly adjustable clamps and Quick-Start Guide.

#### Optional extras:

Clamping stud No. 360025.

#### Note:

- Overall length L remains unchanged (reduced risk of collisions).
- For accessories see No. 360530; 360570 and No. 361400; 361440; 361660 – 361970.
- Always clamp 2 workpieces!

### Technical description

Clamping range d	82 - 171 mm
Series	Duo

Jaw height $h_1$	40 mm
Type	125
Weight	49 kg
Colour code for suitable accessories	Duo
Base body height c -0.02	100 mm
Clamping force up to maximum	40 kN
Base body length a	530 mm
Tenon slot tolerance	H7
Clamping range b	0 - 89 mm
Overall length L	640 mm
Jaw height $h_2$	20 mm
Tenon slots	20H7 mm
Version	Zero-point clamping system
Type of product	Machine vice

## Accessories

Workpiece backstop	360555
Stepped jawmovable for type 125	360468 125
Workpiece back-stop 3-dimensional Type 300	360430 300