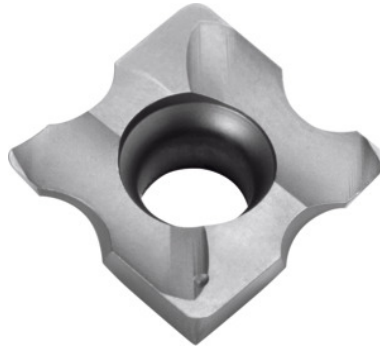


**Radiused indexable insert, HB7525, Type / Radius R: 16/2,5****Order data**

Order number	231525 16/2,5
GTIN	4045197503039
Item class	21Y

Description**Version:**

2-cutter radiused indexable inserts.

Application:

For convex radii on external \varnothing or in holes.

Suitable for :

No. 231500 size 16

X: 4.25 mm

Y: 1.5 mm

Z: 4 mm

Technical description

L	11.11 mm
Z	4 mm
Radius R	2.5 mm
S	3.97 mm
Type	16

Y	1.5 mm
X	4.25 mm
Grade	HB7525
Tool material	Carbide
Type of product	Indexable insert for drilling

Accessories

Radiused indexable insert set Type / Radius R 16/1-3	231526 16/1-3
------------------------------------------------------	---------------