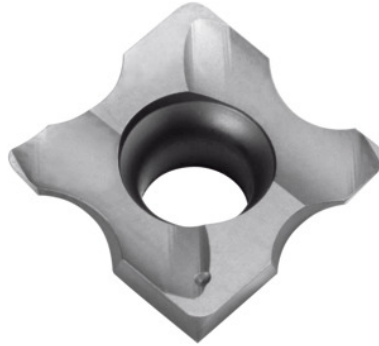




Radiused indexable insert, HB7525, Type / Radius R: 16/3



Order data

Order number	231525 16/3
GTIN	4045197503046
Item class	21Y

Description

Version:

2-cutter radiussed indexable inserts.

Application:

For convex radii on external \varnothing or in holes.

Suitable for :

No. 231500 size 16

X: 4.75 mm

Y: 1.4 mm

Z: 4.4 mm

Technical description

S	3.97 mm
Radius R	3 mm
Type	16
Y	1.4 mm
Z	4.4 mm

L	11.11 mm
X	4.75 mm
Grade	HB7525
Tool material	Carbide
Type of product	Indexable insert for drilling

Accessories

Radiused indexable insert set Type / Radius R 16/1-3	231526 16/1-3
--	---------------