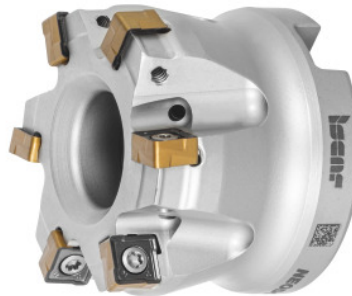




NEODO indexable face / shoulder mill, with bore, \varnothing DC / number of effective cutting edges Z: 80/12mm



Order data

Order number	225760 80/12
GTIN	7291075440133
Item class	19D

Description

Version:

Highly efficient milling system for facing and milling 90° shoulders. For roughing and pre-finishing especially of steel and cast iron materials. Cost-effective due to 8 cutting edges per indexable insert. Extremely stable embedding for the inserts in a dovetail-shaped insert seating.

Spare part:

Pack of insert screws No. **229696 3** (IP9; 2.0 Nm).

Technical description

Series	NEODO
suitable indexable insert	SZ.U0804..
Cutting edge $\varnothing D_c$	80 mm
Overall length L_{tot}	50 mm
Number of cutting edges Z	12
maximum cutting depth $a_{p\ max}$	5 mm
Mounting bore \varnothing	27 mm

Manufacturer's designation	S890 FSZ D080-12-27-R08
Shank type	with bore
Setting angle κ	90 degrees
Milling application	Ramping
Spacing of the cutters	unequal spacing
Through-coolant	yes
Type of product	End / face mill

Accessories

Set of insert screws 10 pieces Type 3	229696 3
---------------------------------------	----------