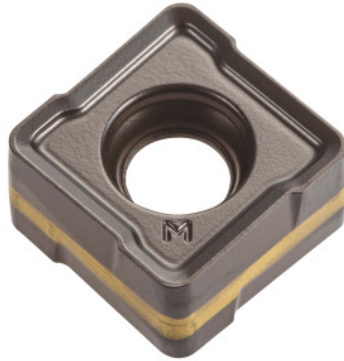


**SZMU 080408PNTR, IC5100, Type: GG****Order data**

Order number	225808 GG
GTIN	7291075460421
Item class	19A

**Description****Version:**

Double-sided indexable insert with 8 helical cutting edges. Special cutting edge geometry for smooth cutting to reduce power consumption during machining.

**Note:**

The minimum order quantity corresponds to one pack unit quantity (VPE) or a multiple thereof. Standard application values for  $a_e = 0.3$  to  $1 \times D$  /  $a_{p\max} = 5.0$  mm.

**Technical description**

Type	GG
Corner radius	0.8 mm
Feed $f_z$ per tooth	0.25 mm
Series	NEODO
Insert thickness E	4.76 mm
Geometry	PNTR

Manufacturer's designation	S890 SZMU 080408PNTR IC5100
ISO code indexable insert	SZMU 080408PNTR
Grade	IC5100
Tool material	Carbide
Number of changes/inserts	4
Type of product	Indexable insert for milling

### User data

	<b>Suitability</b>	<b>V<sub>c</sub></b>	<b>ISO code</b>
GG	suitable	300 m/min	K
GGG	suitable only under restricted conditions	240 m/min	K
wet maximum	suitable only under restricted conditions		
dry	suitable		
Air	suitable		