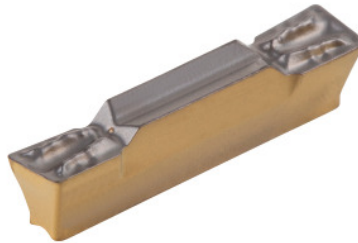




HELIGRIP inserts, IC808, Groove width w / corner radius R: 6/0,8mm



Order data

Order number	273413 6/0,8
GTIN	7291075482621
Item class	26C

Description

Version:

Optimised chip forming and chip control.

Application:

For axial and radial grooving, parting off and internal machining. (HELIGRIP inserts for axial grooving application only compatible with HFHR holder).

Suitable for:

Toolholder No. 273766 – 273768.

Note:

The minimum order quantity corresponds to one pack unit quantity (VPE) or a multiple thereof.

Technical description

Groove width w	6 mm
Corner radius R	0.8 mm
Feed rate f when parting off	0.13 - 0.25 mm/rev.
Tolerance groove width w	0.05 mm
Feed rate f when turning	0.24 - 0.42 mm/rev.
INSL	19 mm
Cutting depth a_p	1 - 3.6 mm

Series	HELI-GRIP
Cutting depth $a_{p \max}$	3.6 mm
Cutting depth $a_{p \min}$	1 mm
Manufacturer's designation	GRIP 6008T IC808
Number of changes/inserts	1
Tool material	Carbide
Indexable insert profile	neutral
Finishing/roughing assignment	Finishing
Main application	UNI
Cutting conditions	continuous
Chip breaker	T
Cutting speed v_c main application	80 - 180 m/min
Grade	IC808
Type of product	Indexable insert for grooving