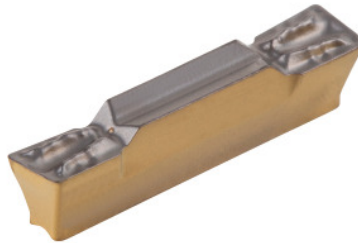




## HELIGRIP inserts, IC808, Groove width w / corner radius R: 5/0,8mm



### Order data

Order number	273413 5/0,8
GTIN	7291075484915
Item class	26C

### Description

**Version:**

Optimised chip forming and chip control.

**Application:**

For axial and radial grooving, parting off and internal machining. (HELIGRIP inserts for axial grooving application only compatible with HFHR holder).

**Suitable for:**

Toolholder No. 273766 – 273768.

**Note:**

The minimum order quantity corresponds to one pack unit quantity (VPE) or a multiple thereof.

### Technical description

Feed rate f when parting off	0.11 - 0.21 mm/rev.
Corner radius R	0.8 mm
Groove width w	5 mm
Tolerance groove width w	0.05 mm
INSL	19 mm
Feed rate f when turning	0.23 - 0.35 mm/rev.
Cutting depth $a_p$	1 - 3 mm

Series	HELI-GRIP
Cutting depth $a_{p \max}$	3 mm
Cutting depth $a_{p \min}$	1 mm
Manufacturer's designation	GRIP 5008T IC808
Number of changes/inserts	1
Tool material	Carbide
Indexable insert profile	neutral
Finishing/roughing assignment	Finishing
Main application	UNI
Cutting conditions	continuous
Chip breaker	T
Cutting speed $v_c$ main application	80 - 180 m/min
Grade	IC808
Type of product	Indexable insert for grooving