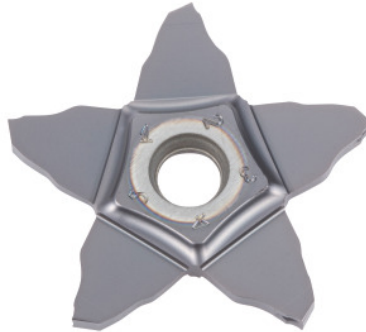




PENTACUT 24N-J/34N-J inserts, IC908, Groove width w / insert size: 2/34mm



Order data

Order number	273937 2/34
GTIN	7291075326499
Item class	26K

Description

Version:

Positive chip former. Soft-cutting. Low to medium feed rates.

Application:

First choice for precision grooving. Parting off is possible. Also suitable for interrupted cutting.

Suitable for:

Toolholder No. 273924 – 273925.

Note:

The minimum order quantity corresponds to one pack unit quantity (VPE) or a multiple thereof.

Technical description

Corner radius R	0.15 mm
Groove width w	2 mm
Tolerance groove width w	0.02 mm
Feed f	0.03 - 0.1 mm/rev.
Grooving depth t_{max}	8.5 mm

Tolerance corner radius R	0.02 mm
Insert size \varnothing d	34 mm
Series	PENTACUT
Manufacturer's designation	PENTA 34N200J020 IC908
Number of changes/inserts	5
Tool material	Carbide
Indexable insert profile	neutral
Finishing/roughing assignment	Finishing
Main application	UNI
Cutting conditions	continuous
Chip breaker	J
Cutting speed v_c main application	60 - 180 m/min
Grade	IC908
Type of product	Indexable insert for grooving