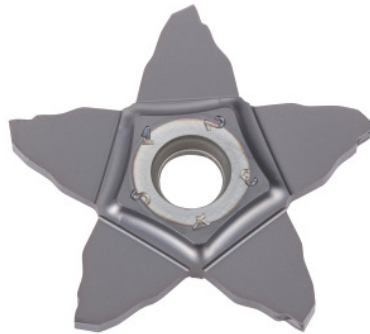




## PENTACUT 24N-C/34N-C inserts, IC908, Groove width w / insert size: 2/34mm



### Order data

Order number	273939 2/34
GTIN	7291075289558
Item class	26K

### Description

#### Version:

Chip breakers with a pronounced protective chamfer. Medium to high feed rates.

#### Application:

First choice for precision grooving. Parting off is possible. Also suitable for interrupted cutting.

#### Suitable for:

Toolholder No. 273924 – 273925.

#### Note:

The minimum order quantity corresponds to one pack unit quantity (VPE) or a multiple thereof.

### Technical description

Corner radius R	0.2 mm
Groove width w	2 mm
Feed f	0.04 - 0.14 mm/rev.
Grooving depth $t_{max}$	8 mm
Tolerance groove width w	0.02 mm
Tolerance corner radius R	0.03 mm

Insert size Ø d	34 mm
Series	PENTACUT
Manufacturer's designation	PENTA 34N200C020 IC908
Number of changes/inserts	5
Tool material	Carbide
Indexable insert profile	neutral
Finishing/roughing assignment	Finishing
Main application	UNI
Cutting conditions	continuous
Chip breaker	C
Cutting speed $v_c$ main application	60 - 180 m/min
Grade	IC908
Type of product	Indexable insert for grooving