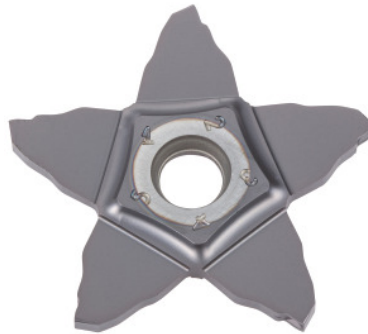




PENTACUT 24N-C/34N-C inserts, IC908, Groove width w / insert size: 3/34mm



Order data

Order number	273939 3/34
GTIN	7291075289527
Item class	26K

Description

Version:

Chip breakers with a pronounced protective chamfer. Medium to high feed rates.

Application:

First choice for precision grooving. Parting off is possible. Also suitable for interrupted cutting.

Suitable for:

Toolholder No. 273924 – 273925.

Note:

The minimum order quantity corresponds to one pack unit quantity (VPE) or a multiple thereof.

Technical description

Groove width w	3 mm
Corner radius R	0.2 mm
Feed f	0.06 - 0.22 mm/rev.
Tolerance groove width w	0.02 mm
Grooving depth t_{max}	10 mm
Tolerance corner radius R	0.03 mm

Insert size Ø d	34 mm
Series	PENTACUT
Manufacturer's designation	PENTA 34N300C020 IC908
Number of changes/inserts	5
Tool material	Carbide
Indexable insert profile	neutral
Finishing/roughing assignment	Finishing
Main application	UNI
Cutting conditions	continuous
Chip breaker	C
Cutting speed v_c main application	60 - 180 m/min
Grade	IC908
Type of product	Indexable insert for grooving